



£475,000

Loft House College Road, Bishopston, Bristol, BS7 9FG

2 The Promenade, Bristol, BS7 8AL

Tel: 0117 3700556

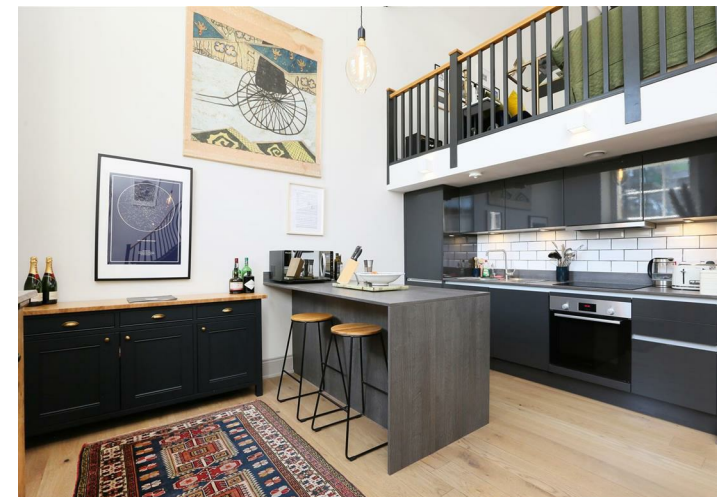
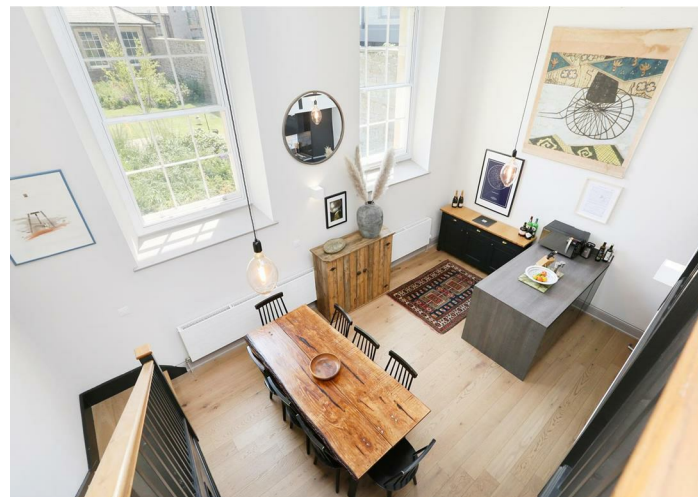
Email: info@elephantlovesbristol.co.uk

Web: www.elephantlovesbristol.co.uk

Loft House College Road Bishopston, Bristol, BS7 9FG

A stylish two-bedroom maisonette flat within the Loft House development in Ashley Down. This stylish and immaculately finished flat comprises two double bedrooms, two bathrooms and a large open-plan kitchen, living space split over two floors with vaulted ceiling and exposed beams. The kitchen is fitted with a range of sleek handleless units with integrated appliances and a low-profile worktop and breakfast bar. Large sash windows and a skylight flood the room with light and provide views over the gardens. The living room is located on the maisonette level and provides a large space for entertaining while still feeling connected to the kitchen diner area below.

A hallway connects the bathrooms and both bedrooms and has a useful built-in storage cupboard. The master bedroom has an en suite bathroom and built-in wardrobes and further benefits from high ceilings and a large sash window, the second bedroom also features a large sash window and high ceilings. The smartly tiled bathrooms are fitted with contemporary white suites. Beyond the private patio garden space are well-maintained and landscaped communal



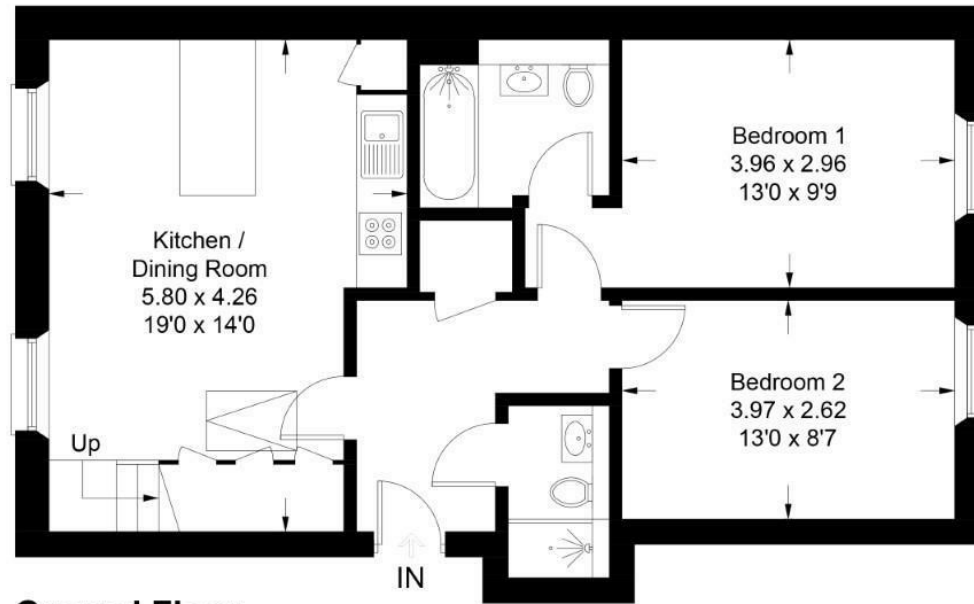
grounds, a secure bike store and an allocated parking space. This is an exceptional home in a great location.



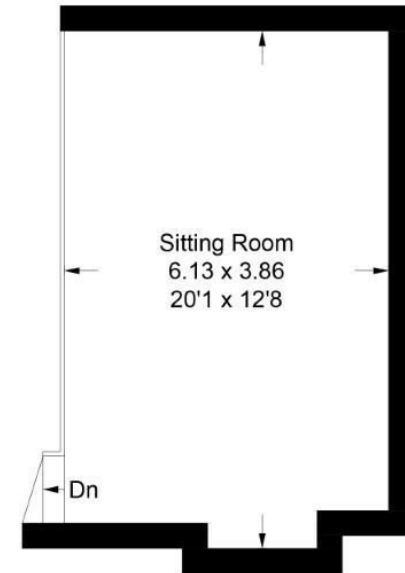


43 Loft House, College Road, Bishopston, Bristol, BS7 9FG

Approximate Gross Internal Area = 86.1 sq m / 927 sq ft



Ground Floor



First Floor

Illustration for identification purposes only, measurements are approximate, not to scale. floorplansUsketch.com © (ID878935)



Energy Efficiency Rating		Environmental Impact (CO ₂) Rating	
Current	Potential	Current	Potential
72	72		

Energy Efficiency Rating: A (92 plus), B (81-91), C (69-80), D (55-68), E (39-54), F (21-38), G (1-20).
 EU Directive 2002/91/EC, England & Wales.

Environmental Impact (CO₂) Rating: A (82 plus), B (61-81), C (49-60), D (35-48), E (21-38), F (11-20), G (1-20).
 EU Directive 2002/91/EC, England & Wales.

Disclaimer: You may download, store and use the material for your own personal use and research. You may not republish, retransmit, redistribute or otherwise make the material available to any party or make the same available on any website, online service or bulletin board of your own or of any other party or make the same available in hard copy or in any other media without the website owner's express prior written consent. The website owner's copyright must remain on all reproductions of material taken from this website.

